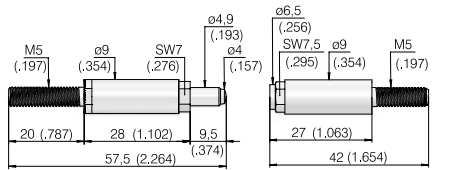


Installation heights: see drawings below  
Recommended stroke: 7,0 mm (.276)

## Mounting and functional dimensions



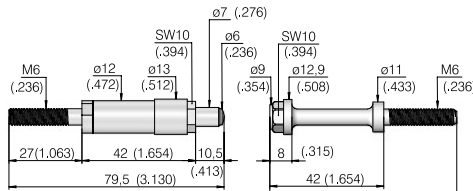
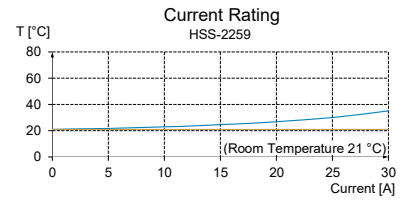
HSS-2259 (test probe) KT-2259 (contact terminal)

### Electrical data

Max. current rating: 25 A  
R<sub>j</sub> typical: < 1 mΩ

### Mechanical data

Working stroke: 7,0 mm (.276)  
Maximum stroke: 9,5 mm (.374)  
Spring force at work. stroke: 10 N (36oz)  
Recommended tightening torque: 3 Nm



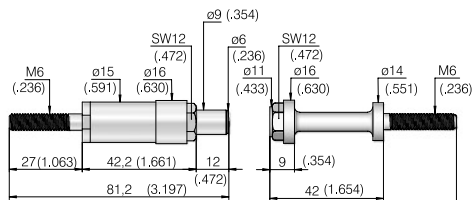
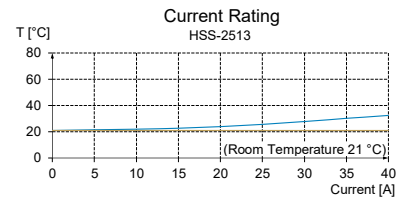
HSS-2513 (test probe) KT-2513 (contact terminal)

### Electrical data

Max. current rating: 35 A  
R<sub>j</sub> typical: < 1 mΩ

### Mechanical data

Working stroke: 7,0 mm (.276)  
Maximum stroke: 10,5 mm (.413)  
Spring force at work. stroke: 12 N (43.2oz)  
Recommended tightening torque: 4 Nm



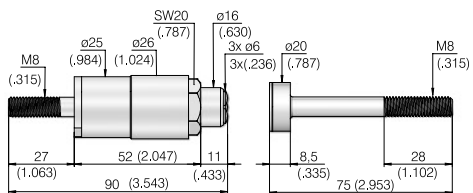
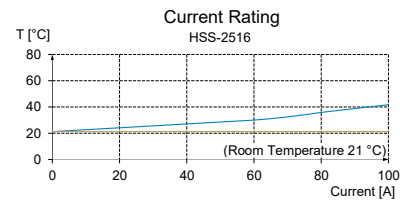
HSS-2516 (test probe) KT-2516 (contact terminal)

### Electrical data

Max. current rating: 100 A  
R<sub>j</sub> typical: < 1 mΩ

### Mechanical data

Working stroke: 7,0 mm (.276)  
Maximum stroke: 12 mm (.472)  
Spring force at work. stroke: 17 N (61.2oz)  
Recommended tightening torque: 4 Nm



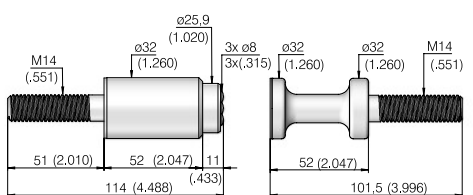
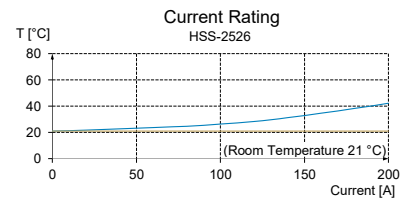
HSS-2526 (test probe) KT-2526 (contact terminal)

### Electrical data

Max. current rating: 200 A  
R<sub>j</sub> typical: < 1 mΩ

### Mechanical data

Working stroke: 7,0 mm (.276)  
Maximum stroke: 11 mm (.433)  
Spring force at work. stroke: 58 N (208.8oz)  
Recommended tightening torque: 11 Nm



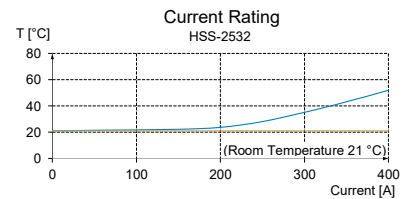
HSS-2532 (test probe) KT-2532 (contact terminal)

### Electrical data

Max. current rating: 400 A  
R<sub>j</sub> typical: < 1 mΩ

### Mechanical data

Working stroke: 7,0 mm (.276)  
Maximum stroke: 11 mm (.433)  
Spring force at work. stroke: 116 N (417.6oz)  
Recommended tightening torque: 59 Nm



### Materials

**Plunger:** Brass, silver-plated  
silver plating on the contact surface  
**Barrel:** Brass, silver-plated  
**Spring:** Stainless steel

### Operating temperature

**Standard:** +1° up to +80° C

The high current test probes HSS-2259 to HSS-2532 are designed for applications with high permanent currents. Their robust construction makes them equally suitable for harsh environmental and possible side loads.

## Ordering example

Test probe:	HSS - 2259	HSS - 2513	HSS - 2516	HSS - 2526	HSS - 2532
Contact terminal:	KT - 2259	KT - 2513	KT - 2516	KT - 2526	KT - 2532